



ASIAGROUP LEASING PTE LTD
 NO. 3 PIONEER PLACE, SINGAPORE 627804
 TEL: 6756 2288 FAX: 6756 8822

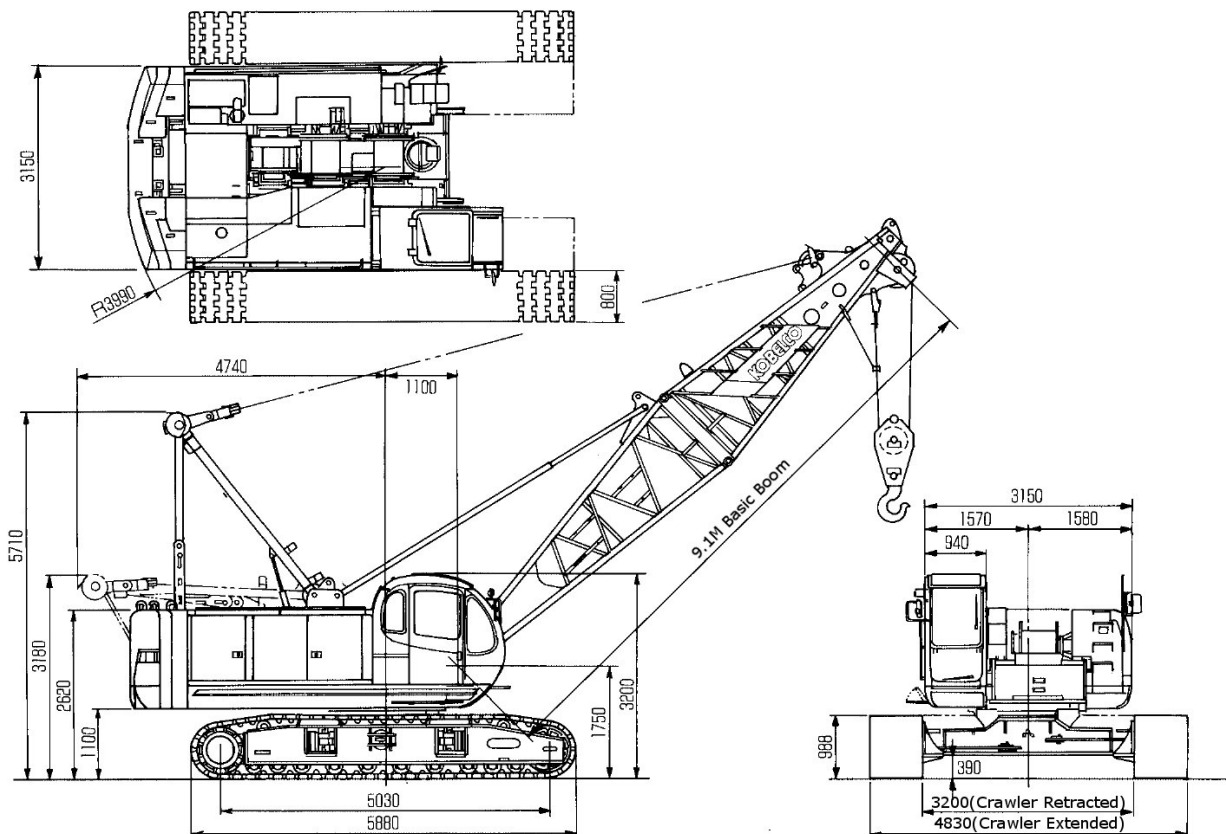
KOBELCO 7065-2

65 TON CRAWLER CRANE

Technical Data

This information is for reference use only.
 Some information might have been omitted deliberately to incorporate the rules and regulations of Singapore Government Body, Singapore
 Standard SS 536 : 2008 (ICS 53.020.20)
 Latest Updated Version: 14th August 2011

DIMENSIONS





KOBELCO 7065-2

SPECIFICATIONS

Max. Lifting Capacity	65t x 4.1m		13m x 10.0m
Boom (Tower) Length	9.1m~54.9m		21.3m~42.7m
Jib (Tower Jib) Length	6.1m / 12.2m / 18.3m		18.3m~30.5m
Max. Boom (Tower) + Jib (Tower Jib) Length	45.7m+12.2m / 42.7m+18.3m		42.7m+30.5m
Rope Speed	Main Hoist	*100 / 70 / 50 / 35 m/min	
	Aux. Hoist (Tower Jib)	*100 / 70 / 50 / 35 m/min	
	Boom (Tower)	*65 m/min	
Slew Speed (Free / Brake)	3.5 / 1.5 (3.5 / 1.5) min ⁻¹ (rpm)		
Traveling Speed	*1.75 / 1.1 km/h		
Operating Weight (Basic)	64.6t		69.2t
Ground Pressure (Basic)	74 (0.75) kPa(kgf/cm ²)		79 (0.81) kPa(kgf/cm ²)
Gradeability	40 (21.8) % ^(°)		-
Line Pull (Max / Rated)	167 / 64.7 (17 / 6.6) kN(tf)		-
Engine	Name	Mitsubishi 6D24-TE-1	
	Rated Output	169 / 1,800 (230 / 1,800) kW/min ⁻¹ (PS/rpm)	
Wire Rope	Main Hoist	Ø22 mm	
	Aux. Hoist (Tower Jib)	Ø22 mm	
	Boom (Tower)	Ø16 mm	

MAIN BOOM RATED LIFTING CAPACITIES

21.4 TON COUNTERWEIGHT, CRAWLER FULLY EXTENDED, 360°

B/L (m) W/R (m)	9.1	12.2	15.2	18.3	21.3	24.4	27.4	30.5	33.5	36.6	39.6	42.7	45.7	48.8	51.8	54.9	B/L (m) W/R (m)
3.1	65.0	65.0/3.6															3.1
4.0	65.0	65.0															4.0
4.1	65.0	65.0	63.1/4.2														4.1
4.5	59.1	59.1	59.0	56.5/4.7													4.5
5.0	52.6	52.5	52.3	52.1	47.9/5.2												5.0
5.5	45.1	45.1	45.1	45.1	44.7	41.3/5.7											5.5
6.0	39.4	39.3	39.2	39.1	39.0	39.0	35.9/6.3	31.9/6.8									6.0
7.0	31.1	31.0	30.9	30.8	30.8	30.7	30.6	30.6	28.4/7.3	25.4/7.9							7.0
8.0	24.8	25.6	25.4	25.4	25.3	25.2	25.1	25.1	25.0	24.9	23.0/8.4	19.8/8.9					8.0
9.0	18.9	21.7	21.5	21.5	21.4	21.3	21.2	21.2	21.0	21.0	20.9	19.8	19.3/9.4				9.0
10.0	17.7/9.2	18.8	18.7	18.6	18.5	18.4	18.3	18.2	18.1	18.1	17.9	17.9	17.8	17.7	16.3/10.5	13.2/11.0	10.0
12.0		13.7/11.9	14.6	14.5	14.4	14.3	14.2	14.2	14.0	14.0	13.9	13.8	13.7	13.6	13.5	13.2	12.0
14.0			12.0	11.9	11.7	11.6	11.5	11.5	11.3	11.3	11.1	11.1	11.0	10.9	10.7	10.6	14.0
16.0			11.0/14.5	10.0	9.8	9.7	9.6	9.5	9.4	9.3	9.2	9.5	9.0	8.9	8.8	8.7	16.0
18.0				9.0/17.1	8.4	8.3	8.2	8.1	8.0	7.9	7.8	7.7	7.6	7.5	7.3	7.2	18.0
20.0					7.4/19.8	7.2	7.1	7.0	6.8	6.8	6.6	6.6	6.5	6.4	6.2	6.1	20.0
22.0						6.3	6.2	6.1	6.0	5.9	5.8	5.7	5.6	5.5	5.3	5.2	22.0
24.0						6.2/22.4	5.5	5.4	5.2	5.2	5.0	5.0	4.8	4.7	4.6	4.5	24.0
26.0							5.1/25.1	4.8	4.6	4.6	4.4	4.4	4.2	4.1	4.0	3.9	26.0
28.0								4.3/27.7	4.1	4.1	3.9	3.8	3.7	3.6	3.5	3.3	28.0
30.0									3.7	3.6	3.5	3.4	3.3	3.2	3.0	2.9	30.0
32.0									3.6/30.3	3.3	3.1	3.0	2.9	2.8	2.6	2.4	32.0
34.0										3.0/33.0	2.8	2.7	2.6	2.4	2.2	2.0	34.0
36.0											2.4/35.6	2.4	2.3	2.1	1.8	1.7	36.0
38.0												2.0	1.9	1.7	1.5	1.4	38.0
40.0												1.9/38.3	1.6	1.4	1.2	1.1	40.0
42.0													1.4/40.9	1.2			42.0

B/L – Boom Length, W/R – Working Radius



KOBELCO 7065-2

FIXED JIB RATED LIFTING CAPACITIES

32T / 19T MAIN HOOK, JIB ANGLE 10°

B/L(m)	30.5			33.5			36.6			39.6			42.7			45.7		B/L(m)
J/L(m)	6.1	12.2	18.3	6.1	12.2	18.3	6.1	12.2	18.3	6.1	12.2	18.3	6.1	12.2	18.3	6.1	12.2	J/L(m)
W/R(m)	6.1	12.2	18.3	6.1	12.2	18.3	6.1	12.2	18.3	6.1	12.2	18.3	6.1	12.2	18.3	6.1	12.2	W/R(m)
9	6.6			6.6														9
10	6.6			6.6			6.6			6.6								10
12	6.6	6.6	4.5	6.6	6.6		6.6	6.6		6.6			6.6			6.6		12
14	6.6	6.6	4.5	6.6	6.6	4.5	6.6	6.6	4.5	6.6	6.6	4.5	6.6	6.6	4.5	6.6	6.6	14
16	6.6	6.6	4.5	6.6	6.6	4.5	6.6	6.6	4.5	6.6	6.6	4.5	6.6	6.6	4.5	6.6	6.6	16
18	6.6	6.6	4.5	6.6	6.6	4.5	6.6	6.6	4.5	6.6	6.6	4.5	6.6	6.6	4.5	6.6	6.6	18
20	6.6	6.6	4.5	6.6	6.6	4.5	6.5	6.6	4.5	6.4	6.6	4.5	6.3	6.6	4.5	6.2	6.5	20
22	5.8	6.1	4.5	5.7	6.0	4.5	5.6	5.9	4.5	5.5	5.8	4.5	5.4	5.7	4.5	5.3	5.6	22
24	5.1	5.4	4.5	4.9	5.2	4.5	4.8	5.1	4.5	4.7	5.0	4.5	4.6	4.9	4.5	4.5	4.8	24
26	4.5	4.7	4.5	4.3	4.6	4.5	4.2	4.5	4.5	4.1	4.4	4.5	4.0	4.3	4.4	3.9	4.2	26
28	3.9	4.2	4.3	3.8	4.1	4.2	3.7	4.0	4.1	3.5	3.8	3.9	3.5	3.7	3.9	3.3	3.6	28
30	3.5	3.7	3.9	3.3	3.6	3.7	3.2	3.5	3.6	3.1	3.4	3.5	2.9	3.3	3.4	2.8	3.1	30
32	3.1	3.3	3.5	2.9	3.2	3.3	2.8	3.1	3.2	2.6	3.0	3.1	2.5	2.8	3.0	2.3	2.7	32
34		3.0	3.1	2.5	2.8	3.0	2.4	2.7	2.9	2.2	2.6	2.7	2.1	2.4	2.6	1.9	2.2	34
36		2.7	2.8	2.2	2.5	2.7	2.0	2.4	2.6	1.9	2.2	2.4	1.7	2.1	2.2	1.5	1.9	36
38		2.4	2.5		2.2	2.4	1.7	2.1	2.2	1.5	1.9	2.1	1.4	1.7	1.9	1.2	1.5	38
40			2.3		1.9	2.1		1.8	2.0	1.3	1.6	1.8	1.1	1.4	1.6		1.3	40
42			2.0		1.6	1.8		1.5	1.7		1.3	1.5		1.2	1.4			42
44			1.8			1.6		1.3	1.5		1.1	1.3			1.1			44

B/L – Boom Length, J/L – Jib Length, W/R – Working Radius

32T / 19T MAIN HOOK, JIB ANGLE 30°

B/L(m)	30.5			33.5			36.6			39.6			42.7			45.7		B/L(m)
J/L(m)	6.1	12.2	18.3	6.1	12.2	18.3	6.1	12.2	18.3	6.1	12.2	18.3	6.1	12.2	18.3	6.1	12.2	J/L(m)
W/R(m)	6.1	12.2	18.3	6.1	12.2	18.3	6.1	12.2	18.3	6.1	12.2	18.3	6.1	12.2	18.3	6.1	12.2	W/R(m)
12	6.6			6.6			6.6			6.6			6.6			6.6		12
14	6.6			6.6			6.6			6.6			6.6			6.6		14
16	6.6	5.0		6.6	5.0		6.6	5.0		6.6	5.0		6.6			6.6		16
18	6.6	5.0	3.2	6.6	5.0	3.2	6.6	5.0		6.6	5.0		6.6	5.0		6.6	5.0	18
20	6.6	5.0	3.2	6.6	5.0	3.2	6.6	5.0	3.2	6.6	5.0	3.2	6.6	5.0	3.2	6.5	5.0	20
22	6.0	5.0	3.2	5.9	5.0	3.2	5.8	5.0	3.2	5.7	5.0	3.2	5.6	5.0	3.2	5.5	5.0	22
24	5.2	5.0	3.2	5.1	5.0	3.2	5.0	5.0	3.2	4.9	5.0	3.2	4.8	5.0	3.2	4.7	5.0	24
26	4.6	4.9	3.2	4.4	4.9	3.2	4.4	4.8	3.2	4.2	4.7	3.2	4.2	4.6	3.2	4.0	4.5	26
28	4.0	4.4	3.2	3.9	4.3	3.2	3.8	4.2	3.2	3.7	4.1	3.2	3.6	4.0	3.2	3.5	3.9	28
30	3.5	3.9	3.1	3.4	3.8	3.2	3.3	3.7	3.2	3.2	3.6	3.2	3.1	3.5	3.2	2.9	3.4	30
32		3.5	3.0	3.0	3.4	3.0	2.9	3.3	3.1	2.7	3.2	3.2	2.6	3.1	3.2	2.5	3.0	32
34		3.1	2.8		3.0	2.9	2.5	2.9	3.0	2.3	2.8	3.1	2.2	2.7	3.0	2.0	2.6	34
36		2.8	2.7		2.7	2.8		2.6	2.8	1.9	2.4	2.7	1.8	2.3	2.6	1.7	2.2	36
38			2.6		2.3	2.6		2.2	2.5	1.6	2.1	2.4	1.5	2.0	2.3	1.3	1.8	38
40			2.4		2.3			1.9	2.2		1.7	2.1	1.2	1.6	2.0		1.5	40
42			2.2			2.0			1.9		1.5	1.8		1.3	1.7		1.2	42
44						1.8			1.7		1.2	1.5		1.1	1.4			44

B/L – Boom Length, J/L – Jib Length, W/R – Working Radius

WITHOUT MAIN HOOK, JIB ANGLE 10°

B/L(m)	30.5			33.5			36.6			39.6			42.7			45.7		B/L(m)
J/L(m)	6.1	12.2	18.3	6.1	12.2	18.3	6.1	12.2	18.3	6.1	12.2	18.3	6.1	12.2	18.3	6.1	12.2	J/L(m)
W/R(m)	6.1	12.2	18.3	6.1	12.2	18.3	6.1	12.2	18.3	6.1	12.2	18.3	6.1	12.2	18.3	6.1	12.2	W/R(m)
9	6.6			6.6														9
10	6.6			6.6			6.6			6.6								10
12	6.6	6.6	4.5	6.6	6.6		6.6	6.6		6.6			6.6			6.6		12
14	6.6	6.6	4.5	6.6	6.6	4.5	6.6	6.6	4.5	6.6	6.6	4.5	6.6	6.6	4.5	6.6	6.6	14
16	6.6	6.6	4.5	6.6	6.6	4.5	6.6	6.6	4.5	6.6	6.6	4.5	6.6	6.6	4.5	6.6	6.6	16
18	6.6	6.6	4.5	6.6	6.6	4.5	6.6	6.6	4.5	6.6	6.6	4.5	6.6	6.6	4.5	6.6	6.6	18
20	6.6	6.6	4.5	6.6	6.6	4.5	6.6	6.6	4.5	6.6	6.6	4.5	6.6	6.6	4.5	6.5	6.6	20
22	6.1	6.4	4.5	6.0	6.2	4.5	5.9	6.2	4.5	5.8	6.0	4.5	5.7	6.0	4.5	5.6	5.8	22
24	5.4	5.6	4.5	5.2	5.5	4.5	5.1	5.4	4.5	5.0	5.3	4.5	4.9	5.2	4.5	4.8	5.1	24
26	4.7	5.0	4.5	4.6	4.8	4.5	4.5	4.8	4.5	4.4	4.6	4.5	4.3	4.5	4.5	4.2	4.4	26
28	4.2	4.4	4.5	4.1	4.3	4.4	4.0	4.2	4.3	3.9	4.1	4.2	3.8	4.0	4.1	3.6	3.9	28
30	3.8	4.0	4.1	3.6	3.8	3.9	3.5	3.7	3.9	3.4	3.6	3.7	3.3	3.5	3.6	3.2	3.4	30
32	3.4	3.6	3.7	3.2	3.4	3.5	3.1	3.3	3.5	3.0	3.2	3.3	2.9	3.1	3.2	2.7	3.0	32
34		3.2	3.3	2.9	3.1	3.2	2.8	3.0	3.1	2.6	2.9	3.0	2.5	2.8	2.9	2.3	2.6	34
36		2.9	3.0	2.6	2.8	2.9	2.5	2.7	2.8	2.3	2.5	2.7	2.2	2.4	2.6	2.0	2.2	36
38		2.6	2.8		2.5	2.6	2.2	2.4	2.5	2.0	2.2	2.4	1.8	2.1	2.2	1.6	1.9	38
40			2.5		2.3	2.4		2.1	2.3	1.7	1.9	2.1	1.6	1.8	2.0	1.4	1.6	40
42			2.3		2.0	2.1		1.9	2.0		1.7	1.8	1.3	1.6	1.7	1.1	1.4	42
44			2.1			1.9		1.6	1.8		1.4	1.6	1.1	1.3	1.5		1.1	44

B/L – Boom Length, J/L – Jib Length, W/R – Working Radius



KOBELCO 7065-2

FIXED JIB RATED LIFTING CAPACITIES
WITHOUT MAIN HOOK, JIB ANGLE 30°

B/L(m)	30.5			33.5			36.6			39.6			42.7			45.7		B/L(m)
J/L(m)	6.1	12.2	18.3	6.1	12.2	18.3	6.1	12.2	18.3	6.1	12.2	18.3	6.1	12.2	18.3	6.1	12.2	J/L(m)
W/R(m)																		W/R(m)
12	6.6			6.6			6.6			6.6			6.6			6.6		12
14	6.6			6.6			6.6			6.6			6.6			6.6		14
16	6.6	5.0		6.6	5.0		6.6	5.0		6.6	5.0		6.6	5.0		6.6	5.0	16
18	6.6	5.0	3.2	6.6	5.0	3.2	6.6	5.0	3.2	6.6	5.0	3.2	6.6	5.0	3.2	6.6	5.0	18
20	6.6	5.0	3.2	6.6	5.0	3.2	6.6	5.0	3.2	6.6	5.0	3.2	6.6	5.0	3.2	6.6	5.0	20
22	6.2	5.0	3.2	6.1	5.0	3.2	6.1	5.0	3.2	5.9	5.0	3.2	5.9	5.0	3.2	5.8	5.0	22
24	5.5	5.0	3.2	5.4	5.0	3.2	5.3	5.0	3.2	5.2	5.0	3.2	5.1	5.0	3.2	5.0	5.0	24
26	4.8	4.9	3.2	4.7	5.0	3.2	4.6	5.0	3.2	4.5	4.9	3.2	4.4	4.8	3.2	4.3	4.7	26
28	4.3	4.6	3.2	4.2	4.5	3.2	4.1	4.4	3.2	4.0	4.3	3.2	3.9	4.3	3.2	3.8	4.2	28
30	3.8	4.1	3.1	3.7	4.0	3.2	3.6	3.9	3.2	3.5	3.8	3.2	3.4	3.8	3.2	3.3	3.7	30
32		3.7	3.0	3.3	3.6	3.0	3.2	3.5	3.1	3.1	3.4	3.2	3.0	3.3	3.2	2.9	3.2	32
34		3.3	2.8		3.2	2.9	2.9	3.1	3.0	2.7	3.0	3.1	2.6	3.0	3.2	2.4	2.9	34
36		3.0	2.7		2.9	2.8		2.8	2.9	2.3	2.7	2.9	2.2	2.6	2.8	2.1	2.5	36
38			2.6		2.6	2.7		2.5	2.7	2.0	2.4	2.6	1.9	2.3	2.5	1.7	2.1	38
40			2.5		2.5	2.5		2.2	2.5		2.1	2.3	1.6	2.0	2.3	1.4	1.8	40
42			2.4			2.3			2.2			1.8	2.1		1.7	2.0	1.5	42
44						2.1			2.0			1.5	1.8		1.4	1.7	1.3	44

B/L – Boom Length, J/L – Jib Length, W/R – Working Radius

MAIN BOOM & FIXED JIB WORKING RANGES

