



ASIAGROUP LEASING PTE LTD
 NO. 3 PIONEER PLACE, SINGAPORE 627804
 TEL: 6756 2288 FAX: 6756 8822

SUMITOMO SC650-2

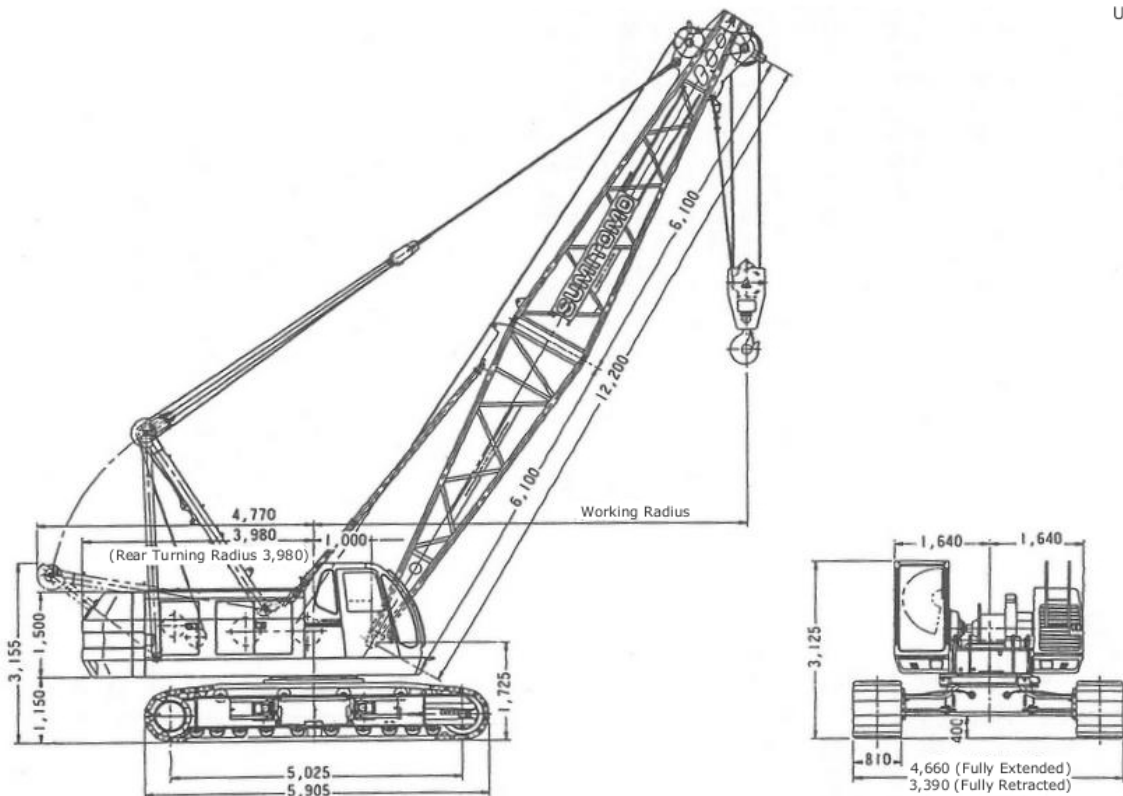
CRAWLER CRANE

65 TON LIFTING CAPACITY

Technical Data

This information is for reference use only.
 Some information might have been omitted deliberately to incorporate the rules and regulations of Singapore Government Body, Singapore Standard SS 536 :
 2008 (ICS 53.020.20)
 Latest Updated Version: 8th August 2011

DIMENSIONS

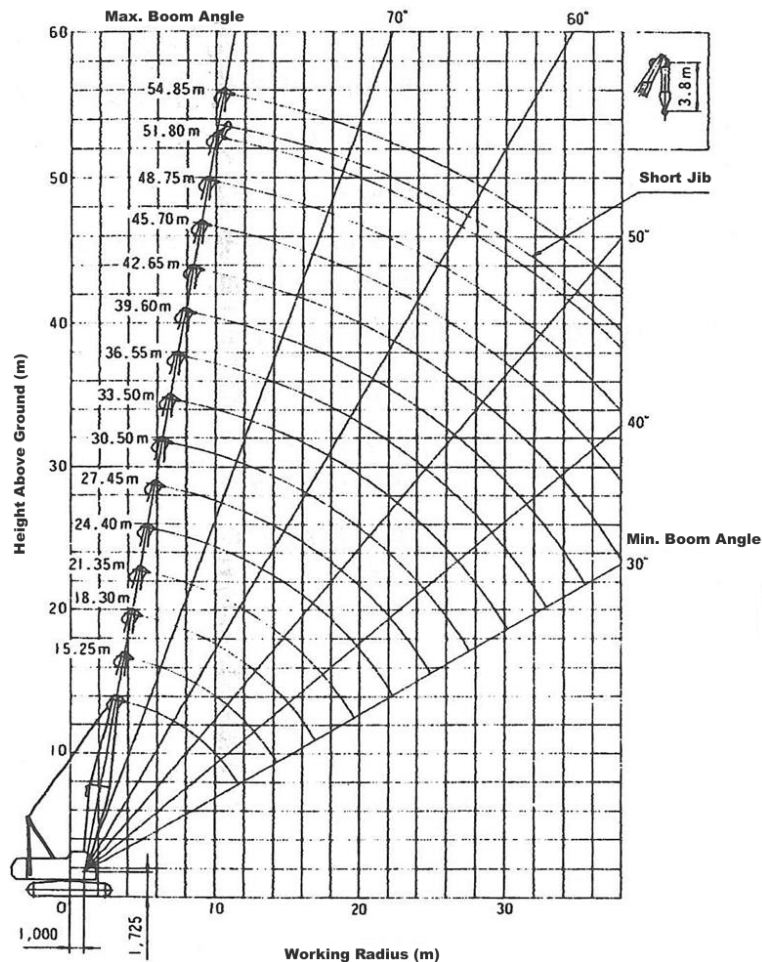


CRANE SPECIFICATIONS

MAXIMUM LIFTING CAPACITY
65t x 4.0m
BASIC BOOM LENGTH
12.20m
MAXIMUM BOOM LENGTH
54.85m
JIB LENGTH
9.15m~18.30m
BOOM + JIB
42.65m +18.30m
FRONT, REAR DRUM ROPE HOIST SPEED
90~3m/min
BOOM HOIST ROPE SPEED
62~4m/min
3RD DRUM HOIST ROPE SPEED
60~4m/min
SLEW SPEED
3.4rpm 3./1.0 rpm (Option)
TRAVELING SPEED
1.6/1.1 km/h
ENGINE MAKE AND MODEL
Hino H07CT diesel engine
RATED OUTPUT
180ps/2,100rpm
GRADEABILITY
22° (40%)
GROUND PRESSURE (WITH 810M SHOE)
0.74kg/cm²
OVERALL WEIGHT (WITH BASIC BOOM)
64.0t

HOOK WEIGHT
65 ton hook (5 sheave): 850kg
35 ton hook (3 sheave): 500kg
20 ton hook (1 sheave): 400kg
6.5 ton auxiliary hook: 330kg
MAXIMUM LOAD PER PART-LINE (TON)
Main Hook
10 Part-line: 65.0 ton
9 Part-line: 58.5 ton
8 Part-line: 52.0 ton
7 Part-line: 45.5 ton
6 Part-line: 39.0 ton
5 Part-line: 32.5 ton
4 Part-line: 26.0 ton
3 Part-line: 19.5 ton
2 Part-line: 13.0 ton
Auxiliary Hook
1 Part-line: 6.5 ton

MAIN BOOM WORKING RANGE





SUMITOMO SC650-2

LUFFING TOWER LIFTING CAPACITIES
21.00M TOWER BOOM

J/L (m)	16.0				19.0				J/L (m)
	90	80	70	60	90	80	70	60	
T/A (°)									T/A (°)
W/R (m)									W/R (m)
6.7	13.0								6.7
7.0	13.0				13.0/7.5				7.0
8.0	13.0				13.0				8.0
9.0	13.0				13.0				9.0
10.0	13.0				13.0				10.0
12.0	12.0	8.2/12.7			12.0	7.8/13.3			12.0
14.0	10.2	7.3			10.2	7.4			14.0
16.0	8.7	6.2			8.7	6.2			16.0
18.0	7.7/17.5	5.4	4.5/19.1		7.5	5.4	4.5/19.6		18.0
20.0		4.7	4.3		6.5	4.8	4.4		20.0
22.0		4.3/21.7	3.9		6.2/20.4	4.2	3.9		22.0
24.0			3.5	3.0/24.9		3.8	3.5	3.0/25.4	24.0
26.0			3.2/25.7	2.8		3.8/24.1	3.2	2.9	26.0
28.0				2.6			3.0/27.5	2.7	28.0
30.0				2.4/29.4				2.5	30.0
32.0								2.4/30.8	32.0

J/L – Jib Length, T/A – Tower Angle, W/R – Working Radius

24.05M TOWER BOOM

J/L (m)	16.0				19.0				22.0				J/L (m)
	90	80	70	60	90	80	70	60	90	80	70	60	
T/A (°)													T/A (°)
W/R (m)													W/R (m)
6.7	13.0												6.7
7.0	13.0				13.0/7.5								7.0
8.0	13.0				13.0				13.0/8.3				8.0
9.0	13.0				13.0				13.0				9.0
10.0	13.0				13.0				13.0				10.0
12.0	12.0	8.2/12.7			12.0	7.5/13.8			12.0				12.0
14.0	10.2	7.3			10.2	7.3			10.2	6.6/14.9			14.0
16.0	8.7	6.2			8.7	6.1			8.7	6.1			16.0
18.0	7.7/17.5	5.4	4.5/19.1		7.5	5.3			7.5	5.3			18.0
20.0		4.7	4.3		6.5	4.7	4.1/20.7		6.5	4.6			20.0
22.0		4.3/21.7	3.9		6.2/20.4	4.1	3.8		5.6	4.1	3.6/22.2		22.0
24.0			3.5	3.0/24.9		3.7	3.4		5.0/23.3	3.7	3.3		24.0
26.0			3.2/25.7	2.8		3.6/24.6	3.1	2.7/26.9		3.3	3.0		26.0
28.0				2.6			2.8	2.6		3.1/27.5	2.7	2.4/28.9	28.0
30.0				2.4/29.4			2.7/28.6	2.4			2.5	2.3	30.0
32.0								2.2			2.3/31.5	2.1	32.0
34.0								2.2/32.3				1.9	34.0
36.0												1.8/35.2	36.0

J/L – Jib Length, T/A – Tower Angle, W/R – Working Radius

27.10M TOWER BOOM

J/L (m)	16.0				19.0				22.0				25.0				J/L (m)	
	90	80	70	60	90	80	70	60	90	80	70	60	90	80	70	60		
T/A (°)																	T/A (°)	
W/R (m)																	W/R (m)	
6.7	13.0																6.7	
7.0	13.0				13.0/7.5												7.0	
8.0	13.0				13.0				13.0/8.3								8.0	
9.0	13.0				13.0				13.0				13.0				9.0	
10.0	13.0				13.0				13.0				13.0				10.0	
12.0	12.0	7.7/13.2			12.0				12.0				12.0				12.0	
14.0	10.2	7.2			10.2	7.0/14.3			10.2	6.3/15.4			10.2				14.0	
16.0	8.7	6.1			8.7	6.0			8.7	6.0			8.7	5.7/16.6			16.0	
18.0	7.7/17.5	5.3			7.5	5.2			7.5	5.2			7.5	5.1			18.0	
20.0		4.7	4.2/20.1		6.5	4.6	3.8/21.7		6.5	4.5			6.5	4.5			20.0	
22.0		4.1	3.8		6.2/20.4	4.1	3.7		5.6	4.0	3.3/23.3		5.6	4.0			22.0	
24.0		4.1/22.2	3.4			3.7	3.3		5.0/23.3	3.6	3.2		4.9	3.6	3.0/24.9		24.0	
26.0			3.1	2.7/26.4		3.5/25.1	3.0			3.3	2.9		4.2	3.2	2.8		26.0	
28.0			3.0/26.7	2.5			2.7	2.4/28.5		3.0	2.6		4.1/26.2	2.9	2.6		28.0	
30.0				2.3			2.5/29.6	2.2			2.4	2.1/30.5		2.7	2.4		30.0	
32.0				2.2/30.9				2.0			2.2	2.0		2.6/30.9	2.2	1.8/32.5	32.0	
34.0								1.8/33.8			2.1/32.5	1.8			2.0	1.7	34.0	
36.0												1.7			1.9/35.4	1.6	36.0	
38.0												1.7/36.7				1.5	38.0	
40.0																	1.4/39.6	40.0

J/L – Jib Length, T/A – Tower Angle, W/R – Working Radius

- The rated loads shown do not exceed 78% of the tipping load with the machine operating on firm level ground, and are not less than 1.15 times over-front stability stipulated by mobile crane construction standards.
- The actual lifting capacity shown in the chart minus the mass of all attached hooks, slings, etc.
- 1 part-line of the hook is considered to take a load of 6.5 ton.
- The above operation to be carried out with crawler fully extended and high mast configuration.



SUMITOMO SC650-2

LUFFING TOWER LIFTING CAPACITIES
39.30M TOWER BOOM

J / L (m)	16.0				19.0			22.0			25.0			28.0		31.0		J / L (m)
	T / A (°)	90	80	70	60	90	80	70	90	80	70	90	80	70	90	80	90	
W/R (m)	90	80	70	60	90	80	70	90	80	70	90	80	70	90	80	90	80	W/R (m)
6.7	13.0																	6.7
7.0	13.0				13.0/7.5													7.0
8.0	13.0				13.0			11.9/8.3										8.0
9.0	13.0				13.0			11.9			10.7			9.8/9.8				9.0
10.0	13.0				13.0			11.9			10.7			9.8		9.4/10.6		10.0
12.0	12.0				12.0			11.8			10.7			9.8		8.8		12.0
14.0	10.2	6.1/15.3			10.2			10.2			10.2			9.4		8.0		14.0
16.0	8.7	5.8			8.7	5.5/16.4		8.7	5.0/17.6		8.7			8.7		7.6		16.0
18.0	7.7/17.5	5.0			7.5	4.9		7.5	4.9		7.5	4.5/18.7		7.5	4.2/19.8	7.0		18.0
20.0		4.4			6.5	4.3		6.5	4.3		6.5	4.2		6.5	4.1	6.5	3.8/20.9	20.0
22.0		3.9			6.2/20.4	3.8		5.6	3.8		5.6	3.8		5.6	3.7	5.6	3.6	22.0
24.0		3.5	2.8/24.3		3.4	2.6/25.9	5.0/23.3	3.4			4.9	3.3		4.9	3.3	4.9	3.2	24.0
26.0		3.4/24.4	2.6		3.1	2.6		3.1	2.3/27.5		4.2	3.0		4.2	2.9	4.2	2.8	26.0
28.0			2.4		2.9/27.3	2.3		2.8	2.2	4.1/26.2	2.7	2.0/29.0		3.6	2.6	3.6	2.6	28.0
30.0			2.2			2.1		2.5	2.0		2.5	1.9	3.4/29.1	2.4	3.1	2.4	2.4	30.0
32.0			2.1/30.9	1.5/32.5				1.9	2.5/30.1	1.8		2.3	1.7		2.2	2.6	2.2	32.0
34.0				1.4		1.8/33.8			1.6		2.2/33.0	1.6		2.0		2.0	2.0	34.0
36.0				1.3					1.5			1.5		1.9/35.9		1.8	1.8	36.0
38.0				1.2/37.0					1.5/36.7			1.4				1.7	1.7	38.0
39.6												1.3				1.6/38.8	1.6/38.8	39.6

J/L – Jib Length, T/A – Tower Angle, W/R – Working Radius

42.35M TOWER BOOM

J / L (m)	16.0			19.0			22.0			25.0			28.0		31.0		J / L (m)
	T / A (°)	90	80	70	90	80	70	90	80	70	90	80	90	80	90	80	
W/R (m)	90	80	70	90	80	70	90	80	70	90	80	90	80	90	80	W/R (m)	
6.7	12.0																6.7
7.0	12.0				11.7/7.5												7.0
8.0	12.0				11.7			11.0/8.3									8.0
9.0	12.0				11.7			11.0			10.6		8.8/9.8				9.0
10.0	12.0				11.7			11.0			10.5		8.8		8.8/10.6		10.0
12.0	12.0				11.6			11.0			10.2		8.8		8.8		12.0
14.0	10.2	5.5/15.8			10.2			10.2			10.0		8.8		8.0		14.0
16.0	8.7	5.7			8.7	5.2/17.0		8.7			8.7		8.7		7.6		16.0
18.0	7.7/17.5	4.9			7.5	4.8		7.5	4.8/18.1		7.5	4.3/19.2		7.5		7.0	18.0
20.0		4.3			6.5	4.2		6.5	4.2		6.5	4.1	6.5	4.0/20.3	6.5	3.6/21.5	20.0
22.0		3.8			6.2/20.4	3.7		5.6	3.7		5.6	3.7	5.6	3.6	5.6	3.5	22.0
24.0		3.4	2.5/25.3		3.3			5.0/23.3	3.3		4.9	3.3	4.9	3.2	4.9	3.1	24.0
26.0		3.3/24.9	2.4		3.0	2.2/26.9		3.0			4.2	2.9	4.2	2.8	4.2	2.7	26.0
28.0			2.2		2.8/27.8	2.1		2.7	2.1/28.5	4.1/26.2	2.6	3.6	2.6	3.6	2.5	2.8	28.0
30.0			2.0			1.9		2.5	1.9		2.4	3.4/29.1	2.4	3.1	2.3	2.3	30.0
32.0			1.8/31.9			1.7		2.4/30.7	1.7		2.2		2.2	2.6	2.1	2.1	32.0
34.0						1.6			1.5		2.0/33.6		2.0		1.9	1.9	34.0
36.0						1.6/34.8			1.4				1.8		1.7	1.7	36.0
38.0									1.3/37.7				1.8/36.5		1.6	1.6	38.0
39.6															1.5	1.5	39.6

J/L – Jib Length, T/A – Tower Angle, W/R – Working Radius

- The rated loads shown do not exceed 78% of the tipping load with the machine operating on firm level ground, and are not less than 1.15 times over-front stability stipulated by mobile crane construction standards.
- The actual lifting capacity shown in the chart minus the mass of all attached hooks, slings, etc.
- 1 part-line of the hook is considered to take a load of 6.5 ton.
- The above operation to be carried out with crawler fully extended and high mast configuration.

SUMITOMO SC650-2

LUFFING TOWER WORKING RANGE

